

How to Install and Use Spirion Endpoint Scanning for Restricted Information

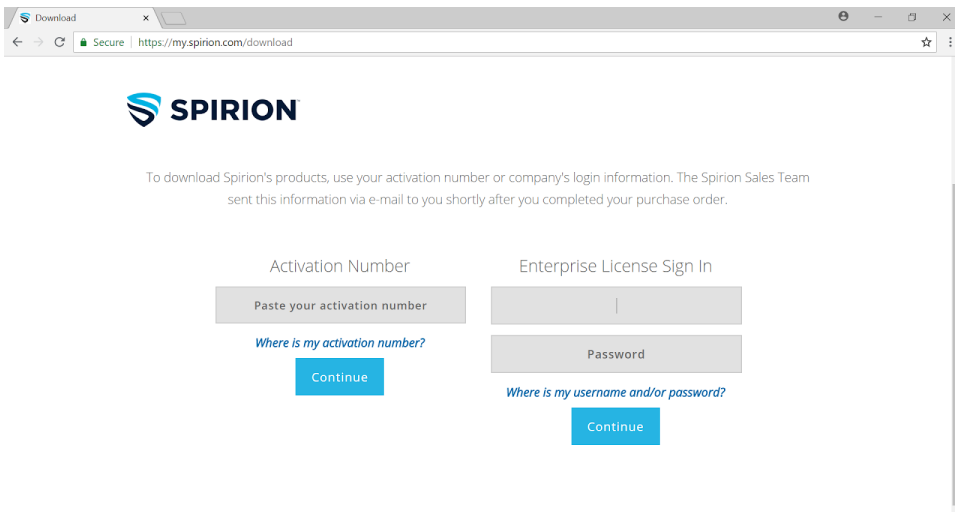
Spirion strengthens existing data loss prevention (DLP) solutions by accurately discovering, classifying, and protecting restricted data. Restricted data includes the following:

- Social security number (SSN)
- Driver license number
- State-issued non-driver ID number
- Bank/financial account number
- Credit/debit card number (CCN)
- Protected Health Information
- Passport number
- University I.T. authentication credentials
- Documents protected by attorney-client privilege

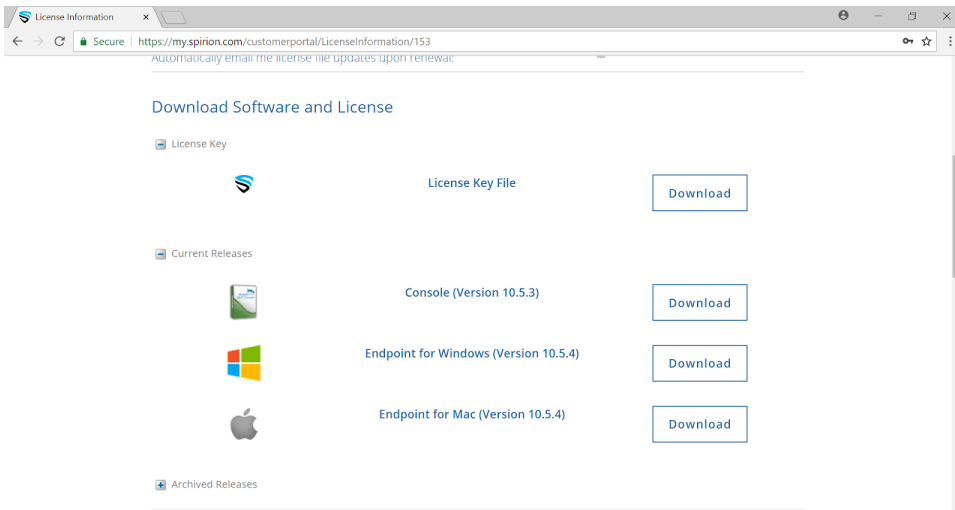
More details on data risk classification can be found here (<https://answers.fredonia.edu/display/SC/Data+Risk+Classification+Policy>).

Installation

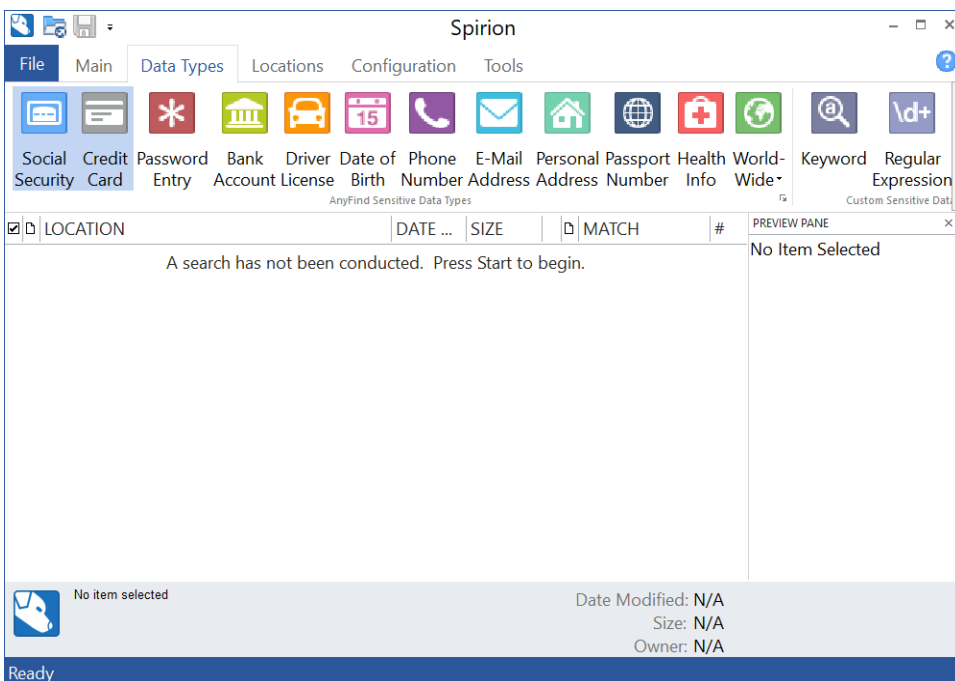
1. Navigate to the Spirion downloads portal and sign in using your Enterprise License account. The portal can be found here (<https://my.spirion.com/download>).



2. Once signed in, scroll down to the available downloads and press the "Download" button for the license key file and the appropriate release for your operating system in order to save them to your computer.

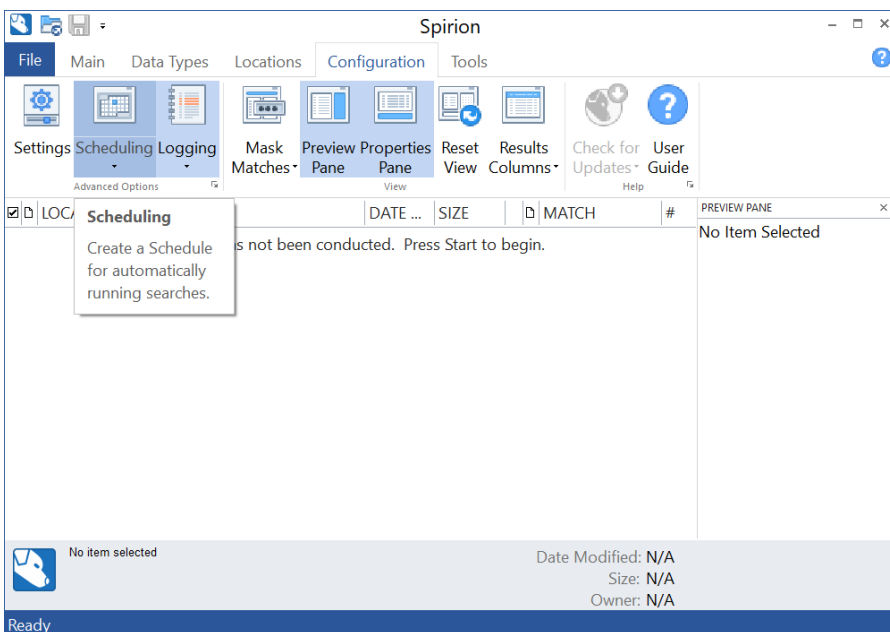


- Go through the installation steps. When the installer asks for the license file, navigate to where you have saved it and select it.
- Once set up, go to the "Data Types" tab and ensure that only the "Social Security" and "Credit Card" options are selected.

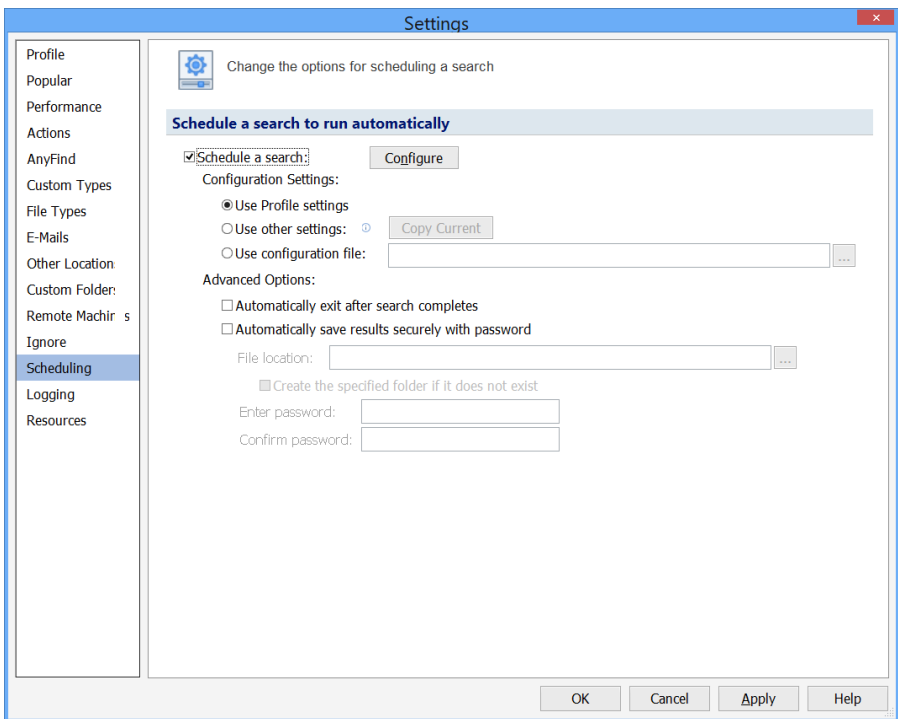


Scheduling a recurring scan

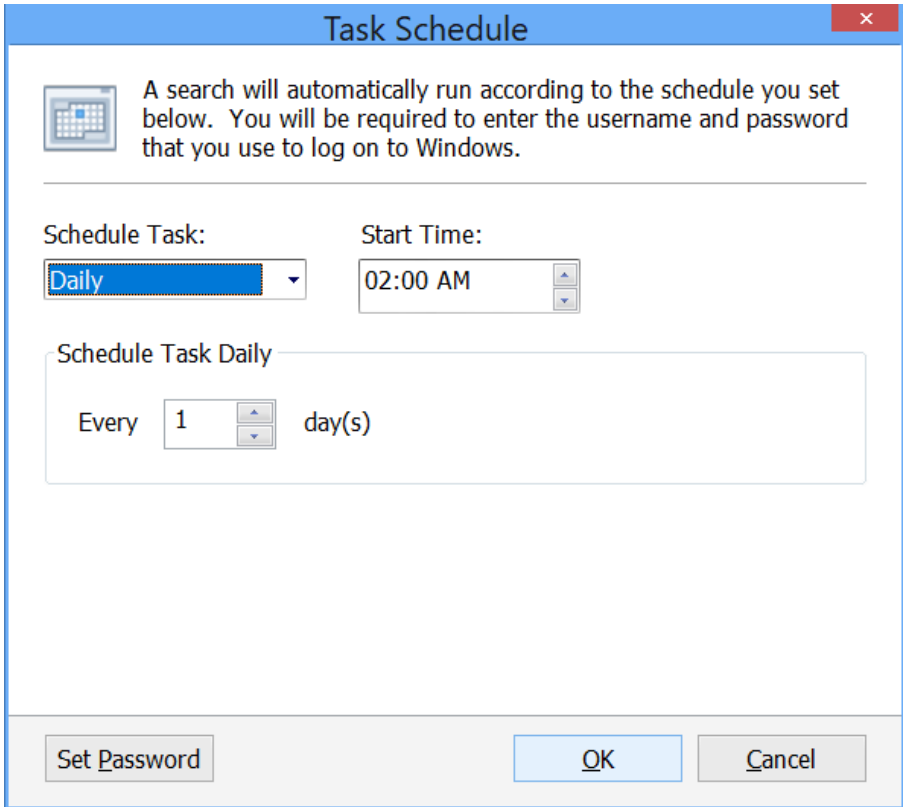
- Navigate to the "Configuration" tab and choose the "Scheduling" option.



- Check the "Schedule a search" box.



3. Press the "Configure" button and schedule the scan, then press the "OK" button.



- Press the "Apply" button in the "Settings" window and enter your password to your user on the computer then press "OK" in the "Scheduled task Account Settings" window, finally press the "OK" button in the "Settings" window.

Scheduled Task Account Settings

Enter Windows Username and Password

Windows requires the user name and password of a user to schedule a task. The task will run as if it were started by that user. Please enter this information below.

Enter User Name:

Enter Password:

Confirm Password:

Remediating the results of a scan

- In the "Main" tab there will be the results of the most recent scan performed on the computer.
 - To shred a file containing regulatory data, select the "Shred" option in the "Actions" group.
 - To redact an entry in a text document, select the preferred result and select the "Redact" option in the "Actions" group.
 - To encrypt a file containing regulatory data, select the "Encrypt" option in the "Actions" group. In order to decrypt the file, it will have to be extracted from the file vault in the "Tools" tab.
 - To quarantine a file into a designated quarantine folder, while shredding the original copy, select the "Quarantine" option in the "Actions" group.

LOCATION	DATE MODIFIED	SIZE	MATCH	#
C:\Users\tito1365\Desktop\CCN/SSN.txt	6/18/2018	423 bytes	Multiple Matches	17
			371812589143949	1
			376936169800084	1
			378771896667698	1
			4512785348295683	2
			457-55-5462	1
			4916294381592017	1
			4929035491017865	1
			4929661192683117	1
			5175716686521203	1
			5191861947239722	1
			5371589564366252	1
			6011088023041857	1
			6011117321867695	1
			601117478055584	1
			6011391140023430	1
			6011829832826578	1

Preview Name: 078-05-1120
 4512785348295683
 4512785348295683
 4929661192683117
 4916294381592017
 4929035491017865
 XXXXXXXXXXXXXXXX
 5371589564366252
 XXXXXXXXXXXXXXXX
 5191861947239722
 XXXXXXXXXXXXXXXX
 5175716686521203
 378771896667698
 XXXXXXXXXXXXXXXX
 376936169800084
 XXXXXXXXXXXXXXXX
 6011088023041857
 6011829832826578
 6011391140023430
 601117478055584
 6011117321867695
 987-65-4320
 987-65-4329
 457-55-5462

NOTE: The above CCNs and SSNs are publicly available for testing purposes



Short URL to this page: [https://answers.fredonia.edu/x/\\$action.getTinyUrl\(\)](https://answers.fredonia.edu/x/$action.getTinyUrl())

Related articles

- [Fredonia Mail Data Loss Prevention Policy for Credit Card Numbers \(CCN\) and Social Security Numbers \(SSN\)](#)
- [Can I use the Duo Security internationally?](#)
- [Do I need a smartphone to use Duo?](#)
- [If I choose to use my personal smartphone using the Duo Mobile app, what kind of information does Duo have access to?](#)
- [Using Hardware Tokens with Duo](#)